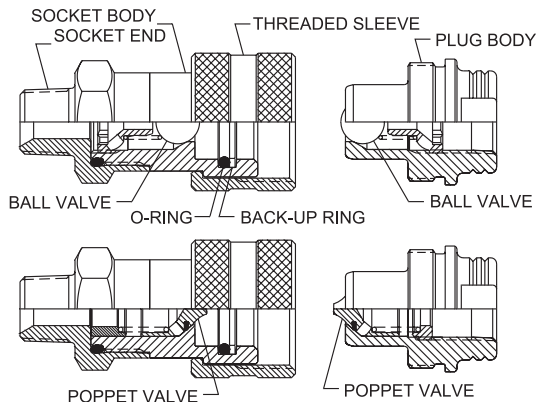
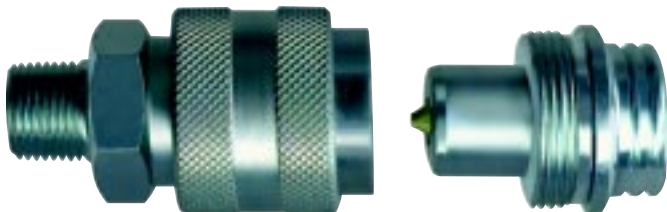




Series WA 56000

Thread-to-Connect 10,000 psi



The Series WA 56000 is a high pressure hydraulic screw together coupling designed to operate at pressures up to 10,000 psi. Its rugged design makes it suitable for use in hydraulic ram, pump and high impulse applications. Body sizes are 1/4" and 3/8".

Features

- Threaded latching
- Rugged steel construction
- Poppet valves with elastomer seal standard in 1/4" coupling
- Poppet valves and ball valves available in 3/8" coupling
- Body size matches thread size. 1/4" and 3/8" body sizes do not interchange.

Standard Materials

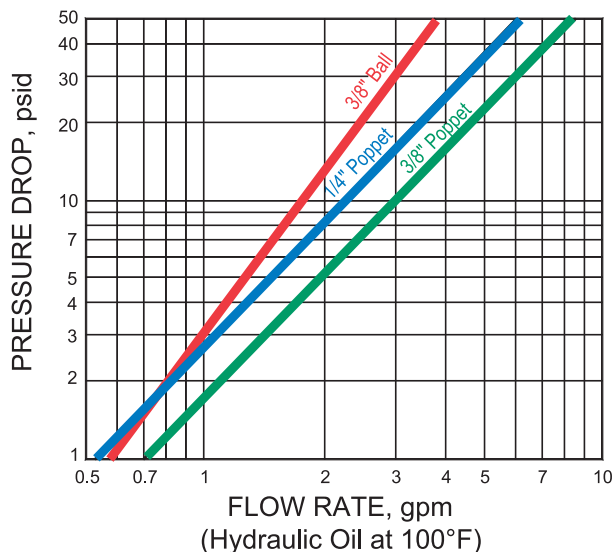
- Zinc plated steel construction
- High strength steel ball valves
- Stainless steel springs
- Buna-N (Nitrile) seals
- Teflon back-up ring (socket)

Accessories

- Dust caps and dust plugs (See page 67)

Rated Pressure

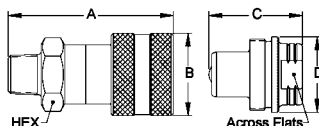
Body Size	PSI	BAR
1/4"	10,000	700
3/8"	10,000	700



TWO-WAY

Sockets – Male End Connections

Part No.	Valve Type	Thread Size NPTF	Dimensions		
			A	B	HEX
WA 56517 00	Poppet	1/4-18	2.36	1.12	0.88
WA 56527 00	Poppet	3/8-18	2.76	1.38	1.06
WA 56227 00	Ball	3/8-18	2.76	1.38	1.06



Plugs – Female End Connections

Part No.	Valve Type	Thread Size NPTF	Dimensions Across		
			C	D	Flats
WA 56514 00	Poppet	1/4-18	1.26	1.10	0.75
WA 56524 00	Poppet	3/8-18	1.52	1.26	0.91
WA 56224 00	Ball	3/8-18	1.52	1.26	0.91

All dimensions in inches.

H A N S E N C O U P L I N G S