



Series 96 Wing Nut



The Series 96 coupling is a heavy-duty wing nut coupling designed for use in hydraulic lines where dry break and minimum air inclusion are required. It is ideal for hydraulic dump trucks, oil field equipment, spreading equipment and applications requiring the ability to connect and/or disconnect under pressure. Body sizes are 3/4", 1" and 1-1/4".

Features

- Non-spill double shut-off with minimum air inclusion
- Connect/disconnect under pressure
- Corrosion resistant brass body
- Plugs can be bulkhead mounted
- Interchanges with other manufacturers' couplings

Standard Materials

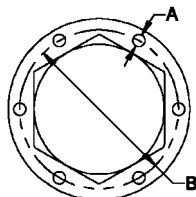
- Brass body (socket & plug)
- Zinc plated steel wing nut (socket)
- Stainless steel springs
- Buna-N (Nitrile) seals

Options

- Dust caps and dust plugs (See page 67)
- Bulkhead mounting flanges

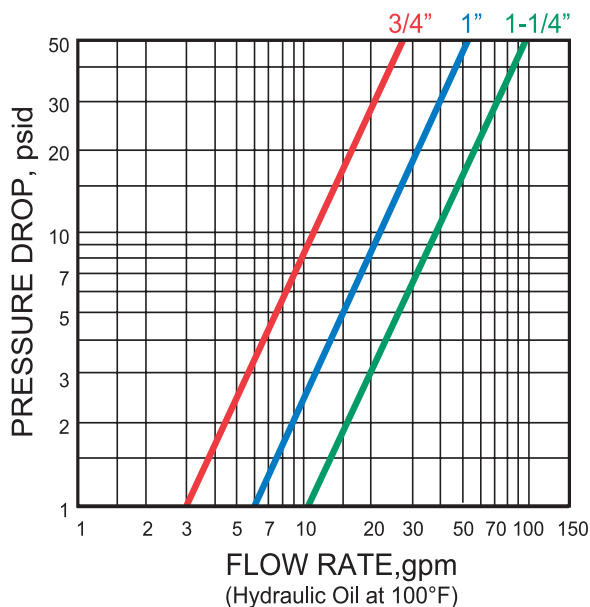
Bulkhead Mounting Flanges

Body Size (inches)	Part No.	Diameters (inches)	
		Bolt Hole	Bolt Circle
3/4	FL96-075	0.201	2.13
1	FL96-100	0.201	2.38
1-1/4	FL96-125	0.201	2.63



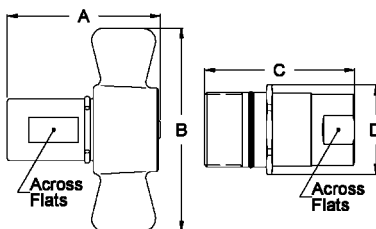
Rated Pressure

Body Series	PSI	BAR
3/4"	3,000	207
1"	3,000	207
1-1/4"	2,750	190



Sockets

Body Size	Part No.	Thread Size NPTF	Dimensions		
			A	B	Across Flats
3/4"	96-S31	3/4-14	3.09	4.06	1.15
1"	96-S36	1-11 1/2	3.78	4.45	1.44
1-1/4"	96-S41	1 1/4-11 1/2	3.97	5.20	1.78



Plugs

Body Size	Part No.	Thread Size NPTF	Dimensions		
			C	D	Across Flats
3/4"	96-P31	3/4-14	3.10	1.78	1.31
1"	96-P36	1-11 1/2	3.55	2.00	1.56
1-1/4"	96-P41	1 1/4-11 1/2	3.71	2.38	1.88

All dimensions in inches.